

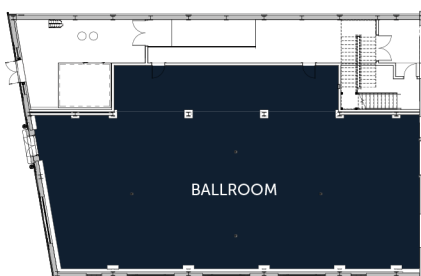
MEETING SPACE

NOPSI Hotel will feature approximately 14,000 square feet of function space. The hotel's ballroom, with huge arched windows and soaring 30-feet ceiling, epitomizes the historic significance of this public building. The renovation retains the room's 24-foot-high crane and tracks, which once transported transformers to storage vaults for repair.

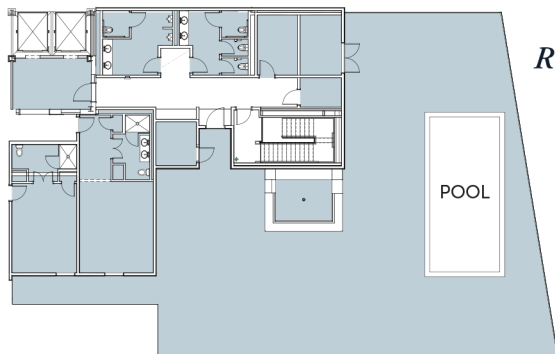
It will become the city's premier venue for events, while richly appointed boardrooms with vaulted ceilings will also offer a popular destination for corporate meetings. Along with that there will also be five break-out rooms, a charming courtyard and a second-floor private dining room above Public Service featuring ceiling-to-floor windows.

FLOOR PLAN & CAPACITIES

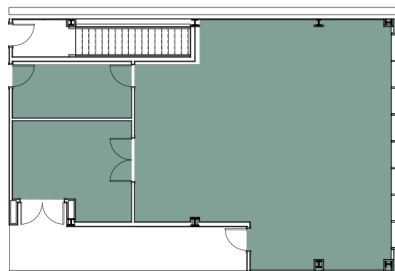
First Floor



Rooftop



Junior Ballroom



Event Space	Square Footage	Dimensions L x W	Classroom	Theater	Conference	U-Shape	Banquet	Reception	Booths
Grand Ballroom	4,000	90 x 44.5	285	445	133	115	400	444	25
Breakout A	550	16.5 x 33.25	40	90	20	15	55	75	3
Breakout B	550	16.5 x 33.25	40	90	20	15	55	75	3
Breakout C	555	16.25 x 33.5	42	92	21	16	57	72	3
Breakout D	550	33.5 x 16.3	40	90	20	15	55	75	3
Breakout E	500	33 x 14.5	30	85	18	12	50	70	3
Public Service Private Dining	1,250	35.5 x 34.75	82	200	38	32	115	127	7
Courtyard Patio	3,100	88 x 35	178	415	83	71	250	277	16
Rooftop	3,000	86 x 34	264	395	125	105	370	411	23